

Trolley Trail

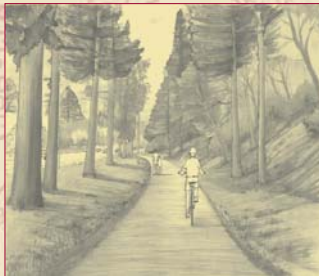
Connecting neighborhoods between Milwaukie and Gladstone



Our Past



Our Present



Our Future

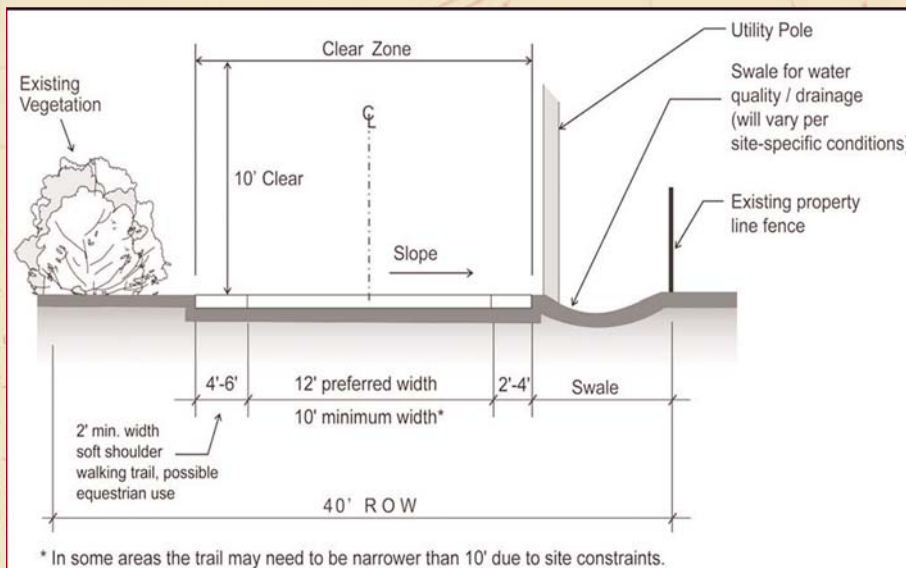
History of the Trolley Trail

The future Trolley Trail is located within a former Portland Traction Co. streetcar line right-of-way. The streetcar service operated between Portland and Oregon City from 1893 until 1958. Freight service continued until 1968, when rail service was abandoned completely. Since that time, citizens and public officials have advocated to preserve the right-of-way for a future recreational and/or commuter trail.

The Trolley Trail Today

Metro and the North Clackamas Parks and Recreation District (NCPRD), with strong support

from the local community, purchased the streetcar line right-of-way in December 2001 from the Union Pacific Railroad Co. The right-of-way is about 40 feet wide and extends for about six miles from the Jefferson Street Boat Ramp in Milwaukie to the intersection of S.E. Abernethy and Glen Echo Ave in Gladstone. The right-of-way is generally between S.E. McLoughlin Boulevard to the east and River Road to the west and traverses residential and commercial development. Portland General Electric maintains an easement for its overhead power lines, as well as access for its maintenance trucks throughout the trail right-of-way. NCPRD owns the corridor and will be responsible for operations and maintenance of the trail when complete.



The future Trolley Trail will connect downtown Milwaukie and Gladstone and the neighborhoods between them. The handicap-accessible trail will serve as an alternative transportation choice for recreational and commuter uses including walking, hiking, biking and connections to shopping, schools and work. The Trolley Trail will serve as the western portion of a 20-mile

Trolley Trail conceptual design



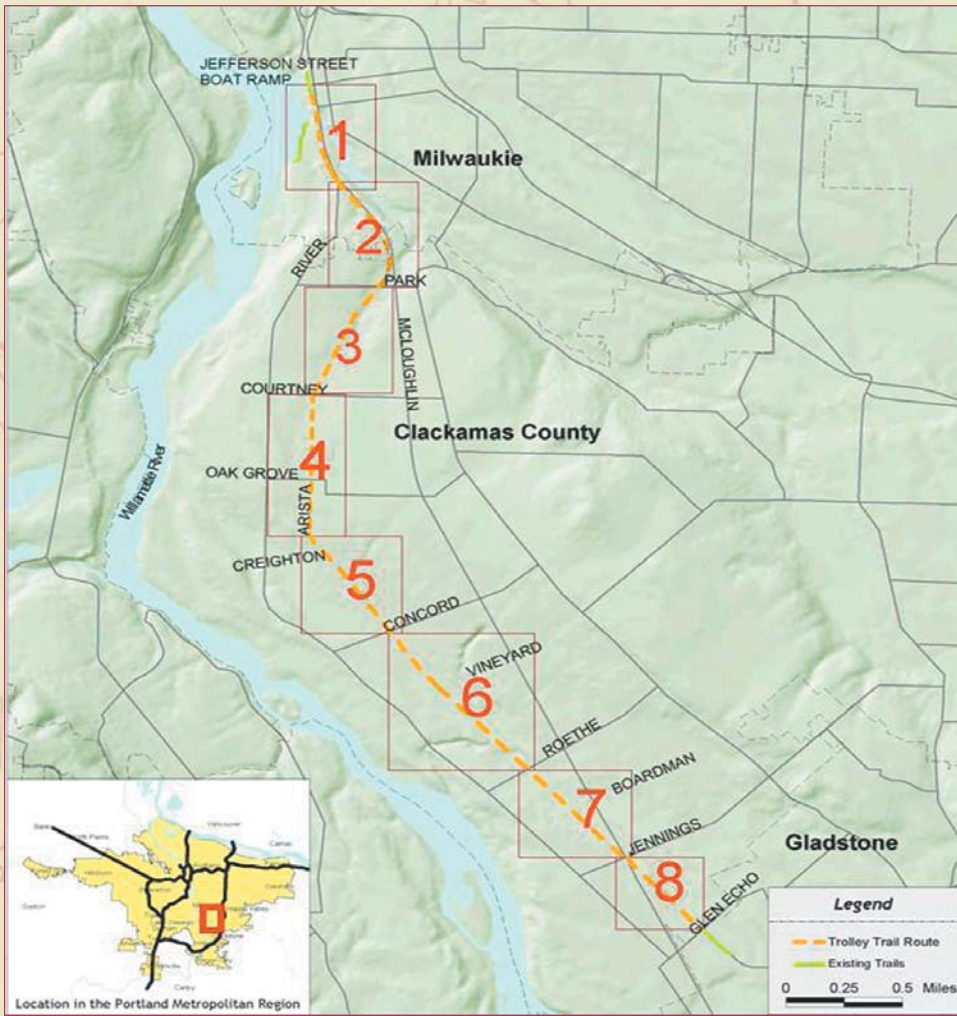
Friends of the Trolley Trail
Oak Lodge Sanitary District

Trolley Trail Partners:

Metro Regional Parks and Greenspaces
Oregon Department of Transportation

City of Milwaukie
City of Gladstone





Trolley Trail Alignment

regional loop trail (connecting with the Springwater Corridor and the I-205 trails).

Metro and NCPRD completed a Master Plan for the trail in January 2004. The plan was adopted by the Clackamas County Board of Commissioners and the Metro Council in March 2004.

The Future Trolley Trail

NCPRD and Clackamas County began the design and engineering for the trail in summer 2006. Surveyors collected data about

the trail corridor and prepared maps in preparation for the design work. The firm of Harper Houf Peterson Righellis (HHPR) has been hired to manage the design. During design, environmental consultants will be collecting information related to wetlands, streams and other aspects of the natural environment along the trail.

Over the course of the coming year, people can be involved in the design process through open houses, meetings with adjacent landowners and project mailings. Staff also expects to continue meeting one-on-one with neigh-

bors, businesses and other interested parties.

Construction of the trail should begin in 2009-10. Currently NCPRD has funding to complete the design, engineering and construction of six miles of the trail.

Trolley Trail Project Contact

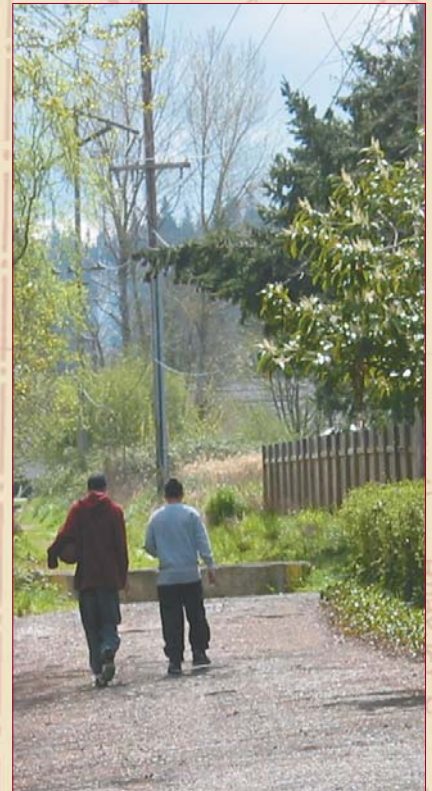
For more information on the Trolley Trail, visit the project Web site

www.hhpr.com/trolleytrail or call NCPRD at

503-794-8004 or e-mail parcs@co.clackamas.or.us

The adopted Trolley Trail Master Plan is available for download at

www.clackamas.us/ncprd



Trolley Trail Partners:

Metro Regional Parks and Greenspaces
Oregon Department of Transportation

City of Milwaukie
City of Gladstone



Friends of the Trolley Trail
Oak Lodge Sanitary District

